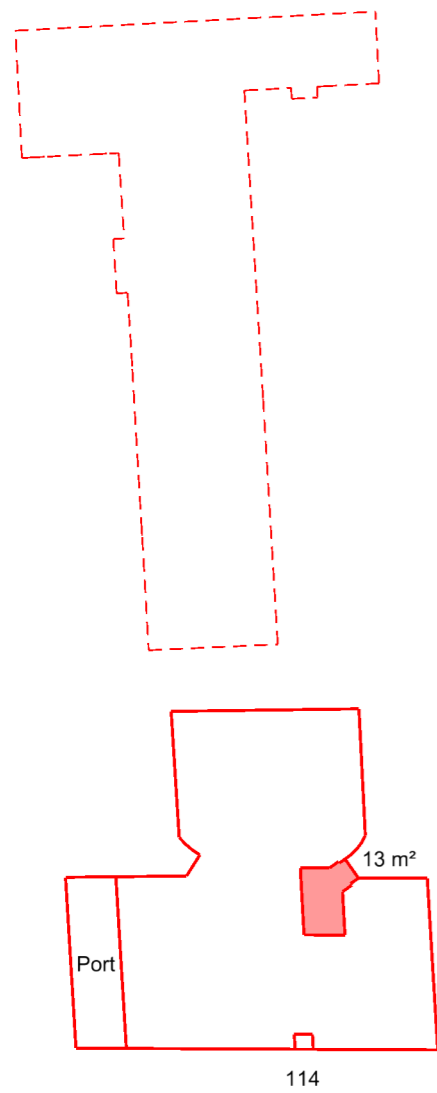
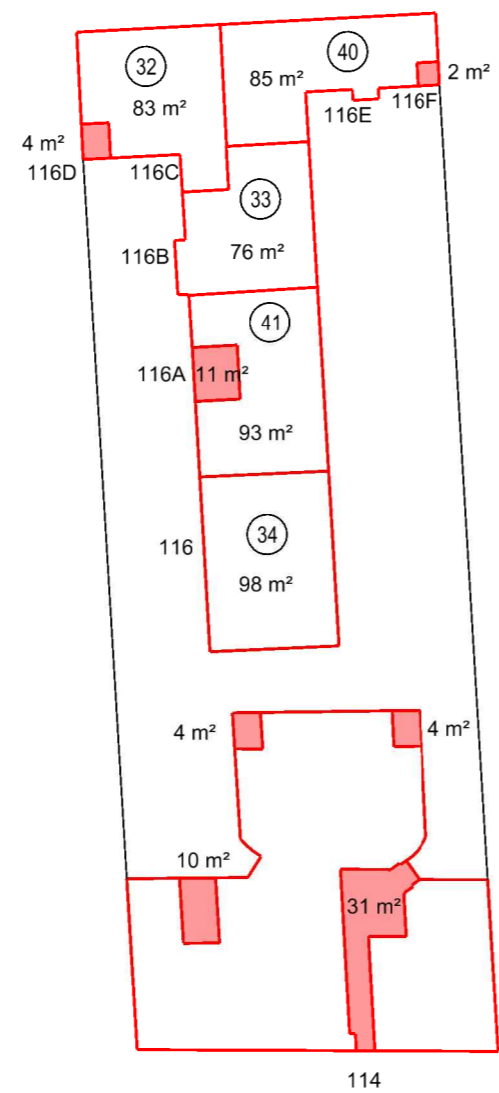


Kælderetage

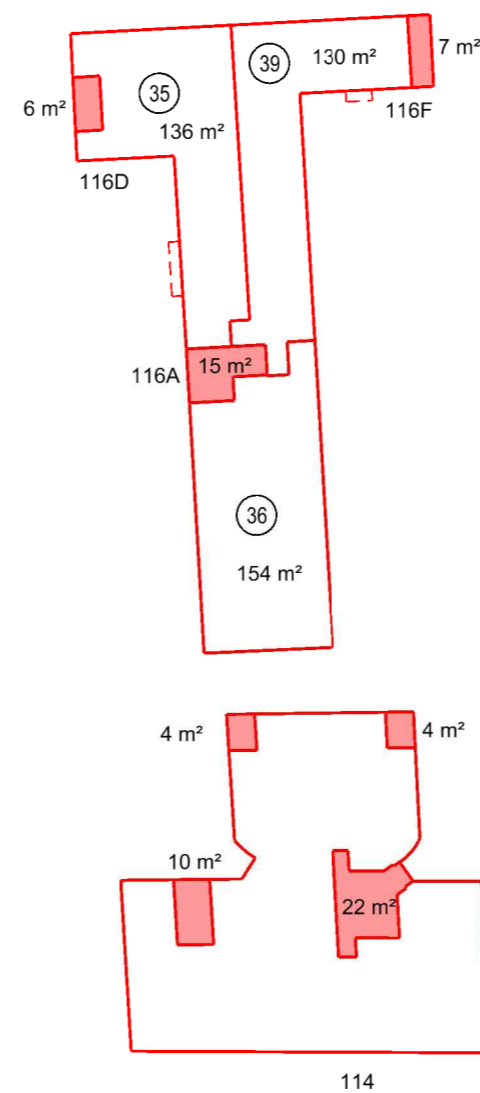


Stueetage

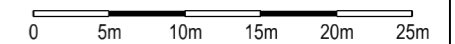
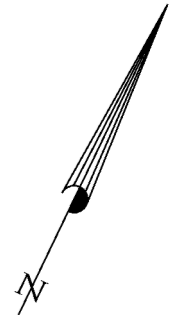
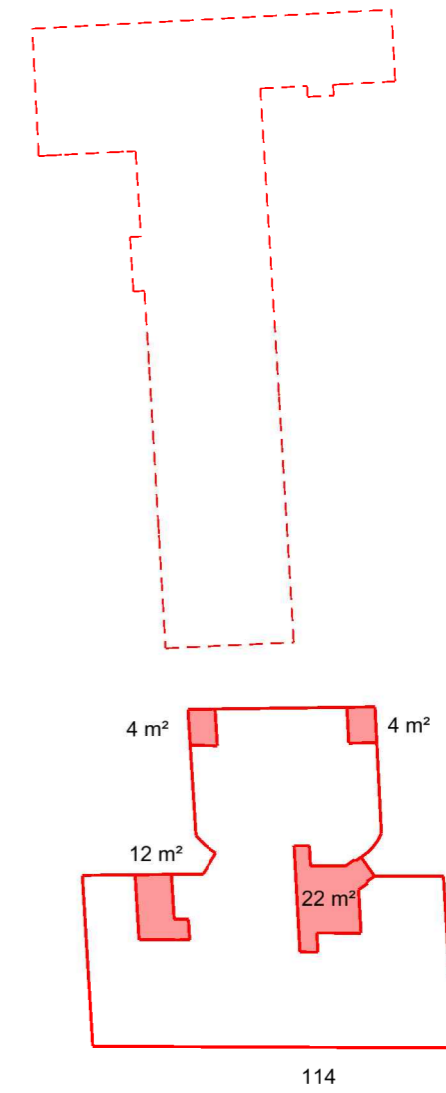


Vesterbrogade

1. sal



2. sal



Vesterbrogade 114-116, 1620 København V

Matr.nr. 39p Udenbys Vester Kvarter, København
 Arealer for ejerlejligheder 32 - 36, 39 - 41 samt trapper

J.nr.: 1807897 | Ini: pem | Målf.: 1:500 | Dato: 29. november 2018 | Koordinatsystem: DKTM3 / ETRS89 | DVR90



Andy Klarholt
 Landinspektør

www.geopartner.dk +45 70 12 10 11 CVR: 20014784

FOT-kort © SDFE - matrikelkort © Geodatastyrelsen - ortofoto © Cowi A/S

X:\2018\1807897\Opmåling\1807897_181119_punkter.dgn